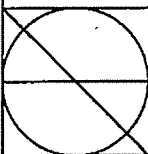
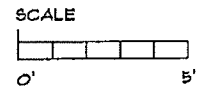


① FLOOR PLAN
 "CORNER UNIT"
 TOTAL SQFT = 425

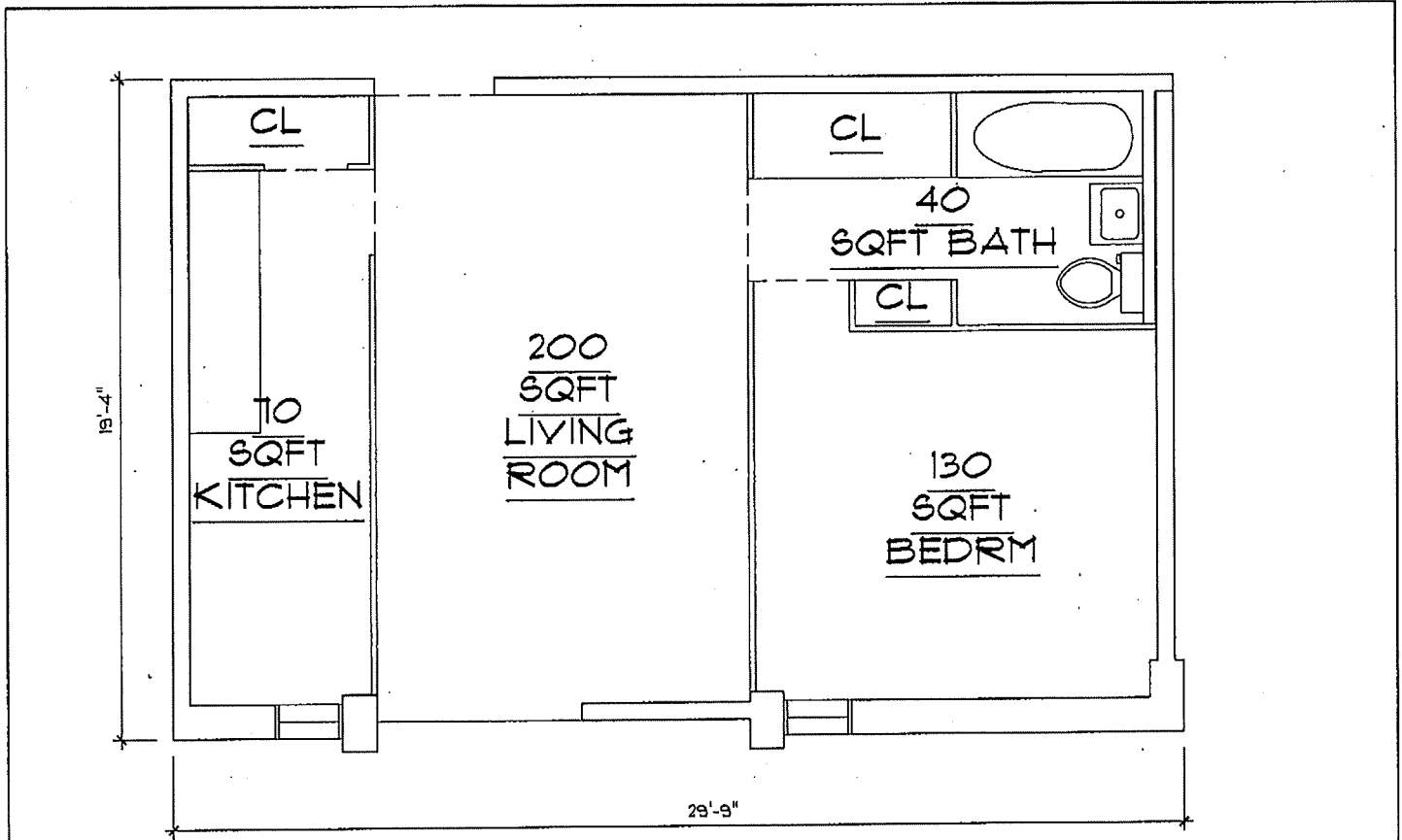


MILSSON SIDEN ASSOCIATES INC.
 Architecture
 Interior Design
 Planning
 282 Essex Street
 Salem, MA 01970
 Tel: (978) 741-5777
 Fax: (978) 741-0557

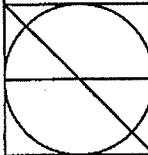
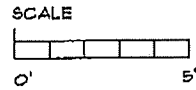
WALL PLAZA 23-2
 BUILDING "B"
 LYNN, MA 01905
 LYNN HOUSING AUTHORITY

DRAWN BY: OAH
 SCALE: 1/4"=1'-0"
 DATE: 02.04.13
 REV.:

SKA-9



① FLOOR PLAN
 "MIDDLE UNIT"
 TOTAL SQFT = 440



MILSON-SIDEN ASSOCIATES INC.
 Architecture
 Interior Design
 Planning
 262 Essex Street
 Salem, MA 01970
 Tel: (978) 741-5777
 Fax: (978) 741-0557

WALL PLAZA 23-2

BUILDING "B"

LYNN, MA 01905

LYNN HOUSING AUTHORITY

DRAWN BY: OAH

SCALE: 1/4"=1'-0"

DATE: 02.04.13

REV.:

SKA-10